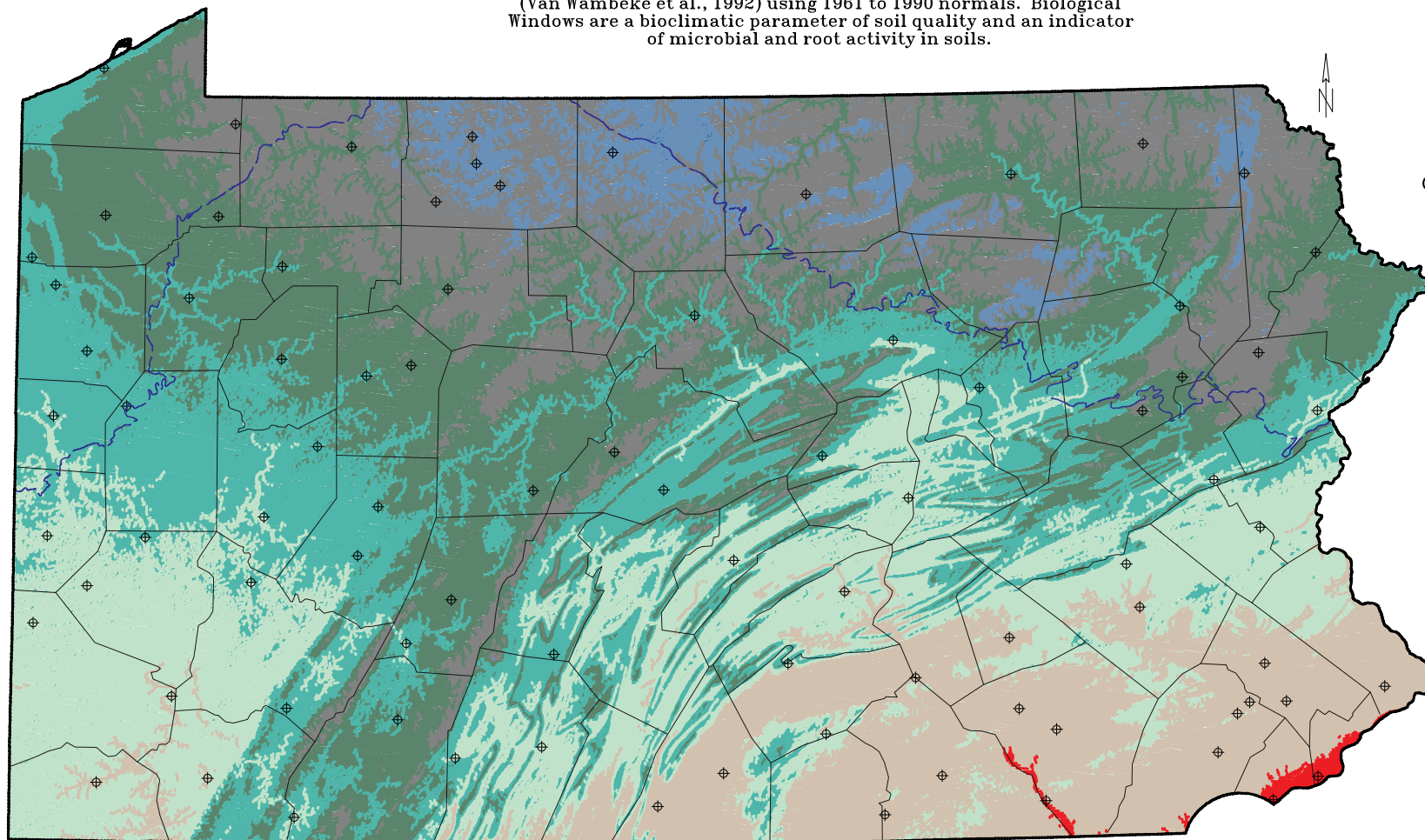


BIOLOGICAL WINDOWS OF PENNSYLVANIA LANDSCAPES

W.J. Waltman, E.J. Ciolkosz, and M.D. Svoboda

42 30 00N +
80 00 00W

Biological Windows are derived from the Newhall Simulation Model (Van Wambeke et al., 1992) using 1961 to 1990 normals. Biological Windows are a bioclimatic parameter of soil quality and an indicator of microbial and root activity in soils.



LEGEND

Cumulative Days that the Soil Moisture Control Section is greater than 5 C (40 F) and Moist.

181 to 190

191 to 200

201 to 210

211 to 220

221 to 230

231 to 240

241 to 250

Wisconsin Glacial Border

Weather Stations

39 30 00N +
80 00 00W

0 25 50 75 100 STATUTE MILES

0 25 50 75 100 KILOMETERS

SCALE 1:2,250,000

39 30 00N +
75 00 00W

Map Series: 96-0060

Source: USDA/NRCS Climate Data Access Facility, Water and Climate Center, Portland, OR; Owenby and Ezell (1992); Albers Equal Area Projection; AUG 1996.

Cooperative project of the Agronomy Department, Penn State Agricultural Experiment Station, The Pennsylvania State University; NRCS Soil Quality Institute and National Soil Survey Center.